

SL-B1060 Spar Buoy

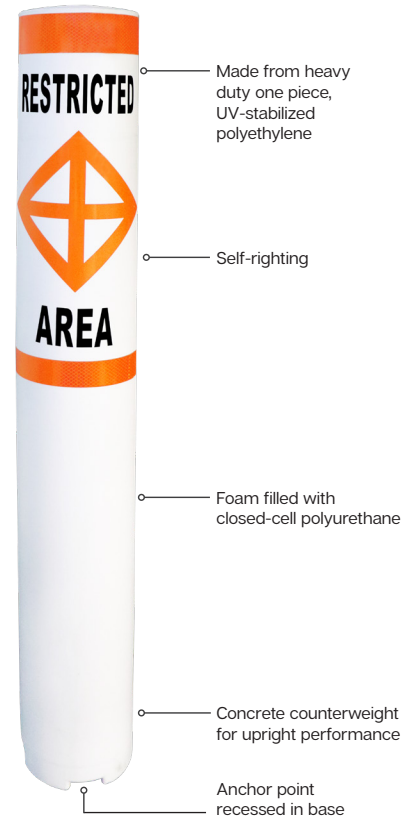
Regulatory and Channel/Navigation Markers

Sealite's SL-B1060 Buoy is rotationally-molded in one piece using UV-stabilized polyethylene making them almost indestructible. The buoy is completely foam filled for added strength and buoyancy.

An internal concrete counterweight gives the buoy a lower center of gravity, so the buoy is able to stand more upright on station.

The USCG approved optional, retroreflective bands provide unmatched night time visibility on the regulatory style. The SL-B1060 buoy can be fitted with an SL-15 or SL-60 solar marine lantern for added visibility at night or in foul weather.

Vinyl wraps and decal restoration kits are also available to repurpose existing regulatory style buoys (see back).



Above: SL-B1060 is available in green can and red nun styles for channel marking configurations (shown in region B colors). Nun shown with optional solar marine lantern and retroreflective tape.



Above: Integrated stainless steel mooring eye and recessed anchor point allow buoys to stand upright when stored



Features

- Molded from strong, durable UV-stabilized polyethylene
- Recessed anchor point for upright and convenient storage
- Easy mounting of solar marine lanterns
- Regulatory signage available

Cost Effective

- Withstand heavy UV exposure - no peeling or fading

Flexible Configurations

- Channel markers - red or green
- Regulatory buoy - white with orange stripes

Optional

- Mold-in graphics
- Mooring equipment & chains
- Vinyl decal restoration kits and wraps to refurbish or repurpose existing buoys

Applications

- Navigation channels, harbor approaches and port entrances
- Regulatory marking of hazards, mooring fields, cautionary zones

Certifications

- Meets U.S federal, state and local regulations

Reliable

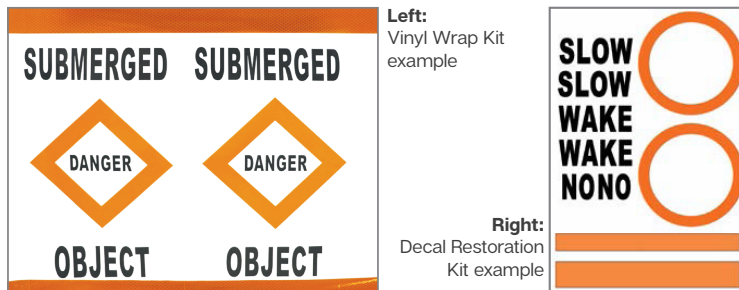
- Excellent buoyancy & stability

Technical Specifications*

SL-B1060 Buoy	
General Characteristics	
Available Colors	Red, Green, White, Yellow, Orange
Nominal Freeboard (in/mm)	36 (914)
Nominal Draft (in/mm)	25 (635)
Maximum Mooring Load (lb/kg)	12 (5)
Submergence (lb/in, kg/cm)	3 (0.5)
Physical Characteristics	
Material	Rotationally-molded UV-stabilized virgin polyethylene with 316-grade stainless steel mooring eye
Wall Thickness (in/mm)	0.2 (5)
Filling	Closed-cell polyurethane foam
Height (in/mm)	61 (1549)
Net Weight (lb/kg)	63 (29)
Product Life Expectancy	12+ years
Certifications	
Quality Assurance	ISO9001:2015
Intellectual Property	
Trademarks	SEALITE® is a registered trademark of Sealite Pty Ltd
Warranty	1 year
Lantern Options	Sealite SL-15 or SL-60*
Options Available	<ul style="list-style-type: none"> • Custom signage • Vinyl wraps • Reflective band

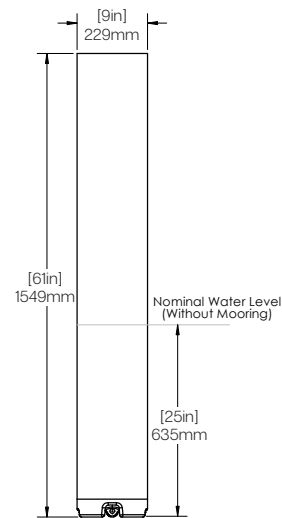
**The SL-B1060 Nun buoy requires a mounting plate (SL-MC-10) for the SL-60 Lantern.

Regulatory Wraps & Restoration Kits		
	Vinyl Wrap Kit (Part No.: SL-BWRAP1060)	Decal Restoration Kit
Material	Two USCG approved retroreflective orange bands, regulatory black messages, and orange symbols on heavy-duty white vinyl material	Two each: retroreflective orange bands, regulatory black messages, and orange symbols
Options	Custom graphics or logo Silver retroreflective band	Custom graphics or logo Silver retroreflective band

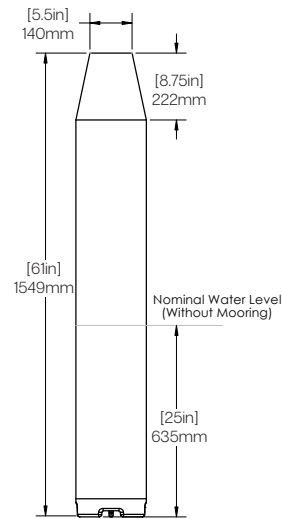


Technical Illustration

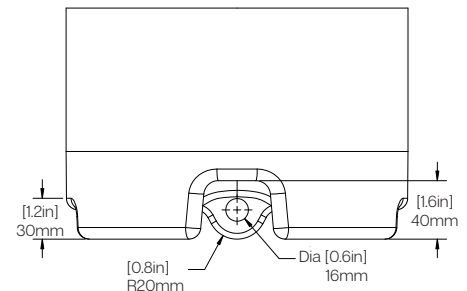
SL-B1060 Can Buoy Dimensions



SL-B1060 Nun Buoy Dimensions



SL-B1060 Bottom Eye Dimensions



† Subject to standard terms and conditions.

* Specifications subject to change or variation without notice.

We believe technology improves navigation™

SL-B1060_DATA_EN_V1-0



Sealite USA LLC
USA
+1 (603) 737 1311

Sealite Asia Pte Ltd
Singapore
+65 6829 2243

Sealite United Kingdom Ltd
UK
+44 (0) 1502 588026

Sealite Pty Ltd
Australia
+61 (0)3 5977 6128

